

Color

All the shapes so far have been filled white with black outlines, and the background of the Display Window has been light gray. To change them, use the *background()*, *fill()*, and *stroke()* functions. The values of the parameters are in the range of 0 to 255, where 255 is white, 128 is medium gray, and 0 is black. Figure 3-3 shows how the values from 0 to 255 map to different gray levels.

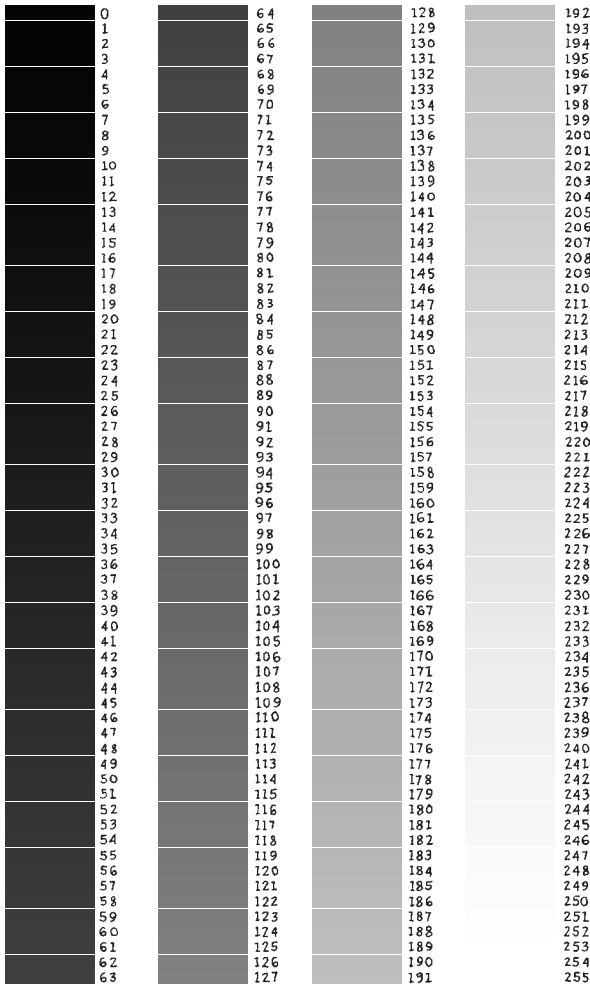


Figure 3-3. Gray values from 0 to 255.